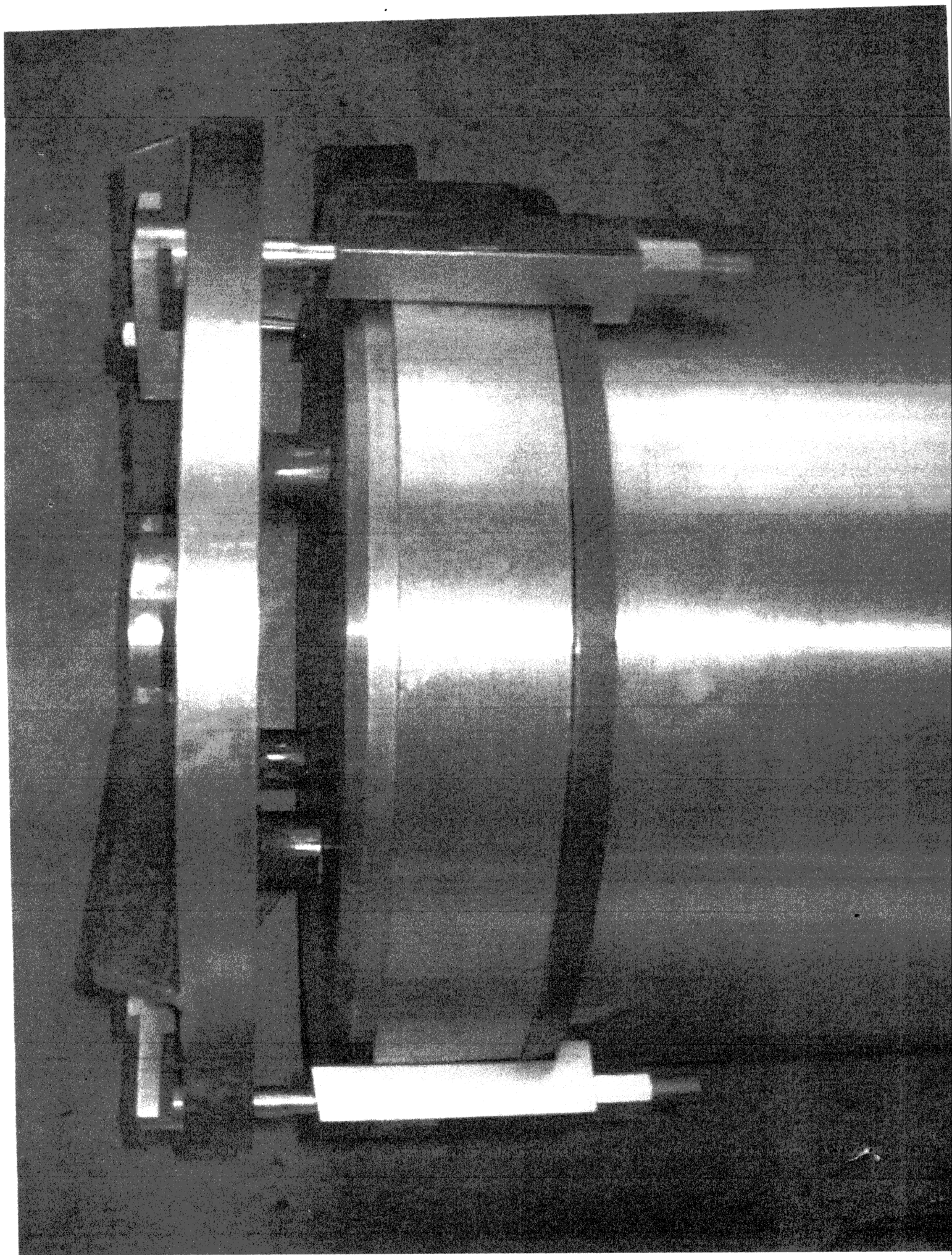
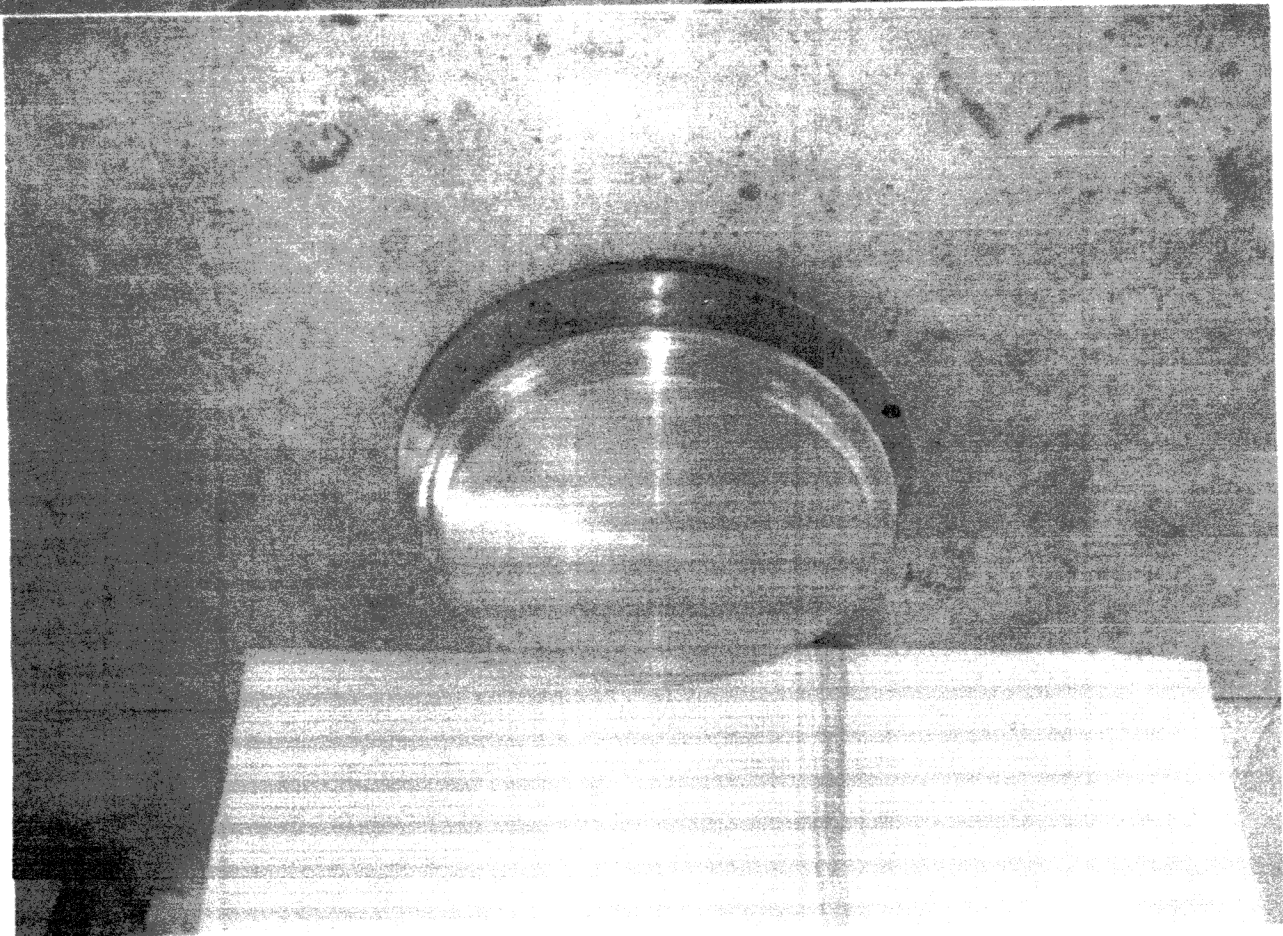
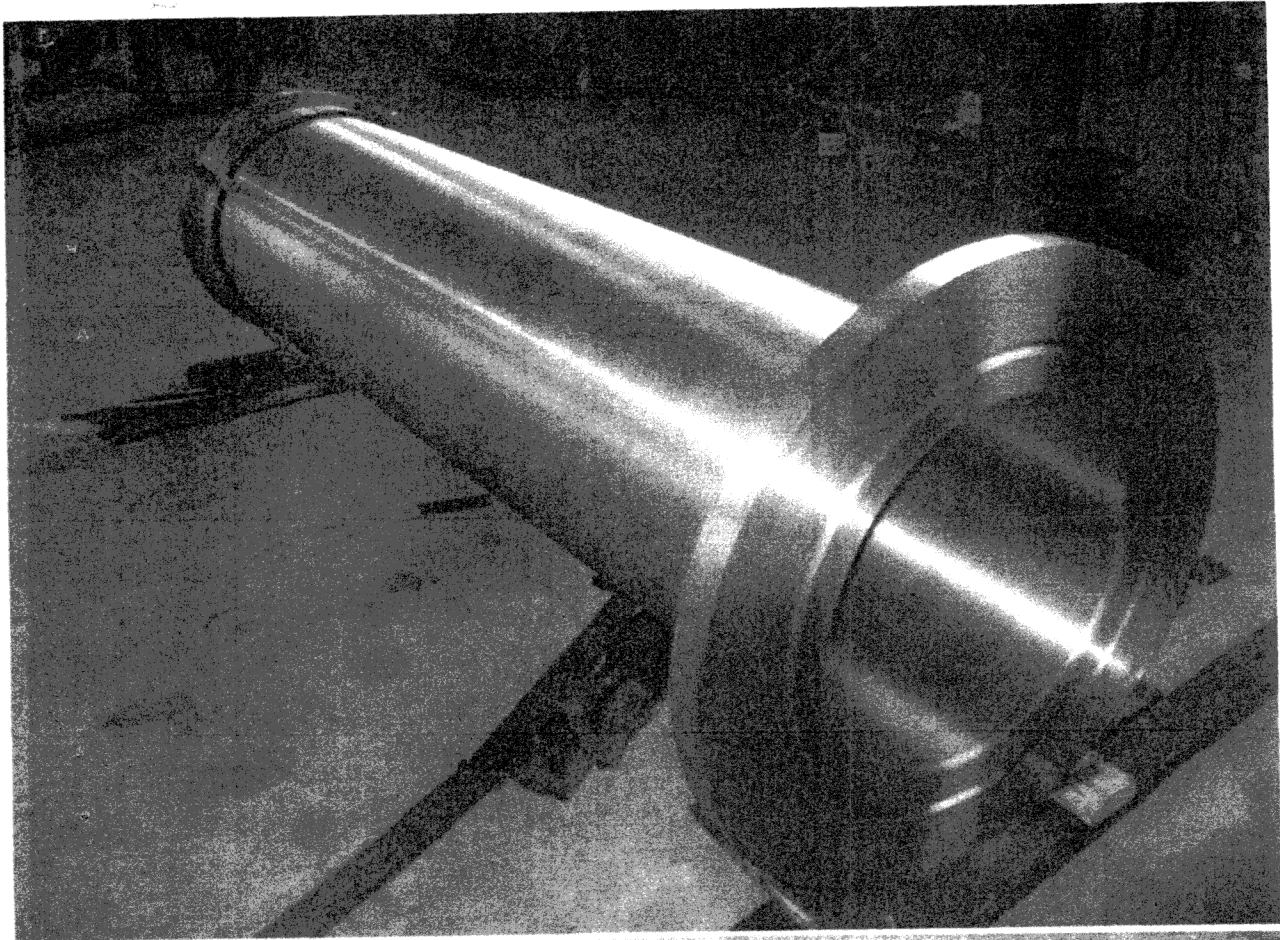


## Specification Sheet

*Annexure-A*

Sr No	Specifications	Quantity
1	<p><b>Copper Crucible (dia 340 mm) with Bottom</b>  Material: Copper (T2 Red Copper)  Diameter: 340 mm  Length: 1400 mm  As per drawing # ZHT112B-5  Photos of Copper Crucible with Bottom &amp; Copy of drawing ZHT112B-5 are attached.  <b>Note:</b>  Purity of Cu <math>\geq</math> 99.9 %  Bottom of crucible is a separate part. When bottom is fitted/clamped to crucible, crucible must be leak tight. Crucible shell must be weld free, a single piece, pitting &amp; porosity free. Internal surface of shell must be smooth for ejection of casted ingot.  <b>Documents required before dispatch:</b>  Drawing of crucibles  Material analysis certificate  Ultrasonic testing report  Photographs of crucible in assembled as well as in dismantled form.  Warranty of product.  Pressure testing report at 0.40 MPa</p>	01 No
2	<p><b>Copper Crucible (dia 460 mm) with Bottom</b>  Material: Copper (T2 Red Copper)  Diameter: 460 mm  Length: 2000 mm  As per drawing # ZHT112B-3  Photos of Copper Crucible with Bottom &amp; Copy of drawing ZHT112B-3 are attached.  <b>Note:</b>  Purity of Cu <math>\geq</math> 99.9 %  Bottom of crucible is a separate part. When bottom is fitted/clamped to crucible, crucible must be leak tight. Crucible shell must be weld free, a single piece, pitting &amp; porosity free. Internal surface of shell must be smooth for ejection of casted ingot.  <b>Documents required before dispatch:</b>  Drawing of crucibles  Material analysis certificate  Ultrasonic testing report  Photographs of crucible in assembled as well as in dismantled form.  Warranty of product.  Pressure testing report at 0.40 MPa</p>	01 No

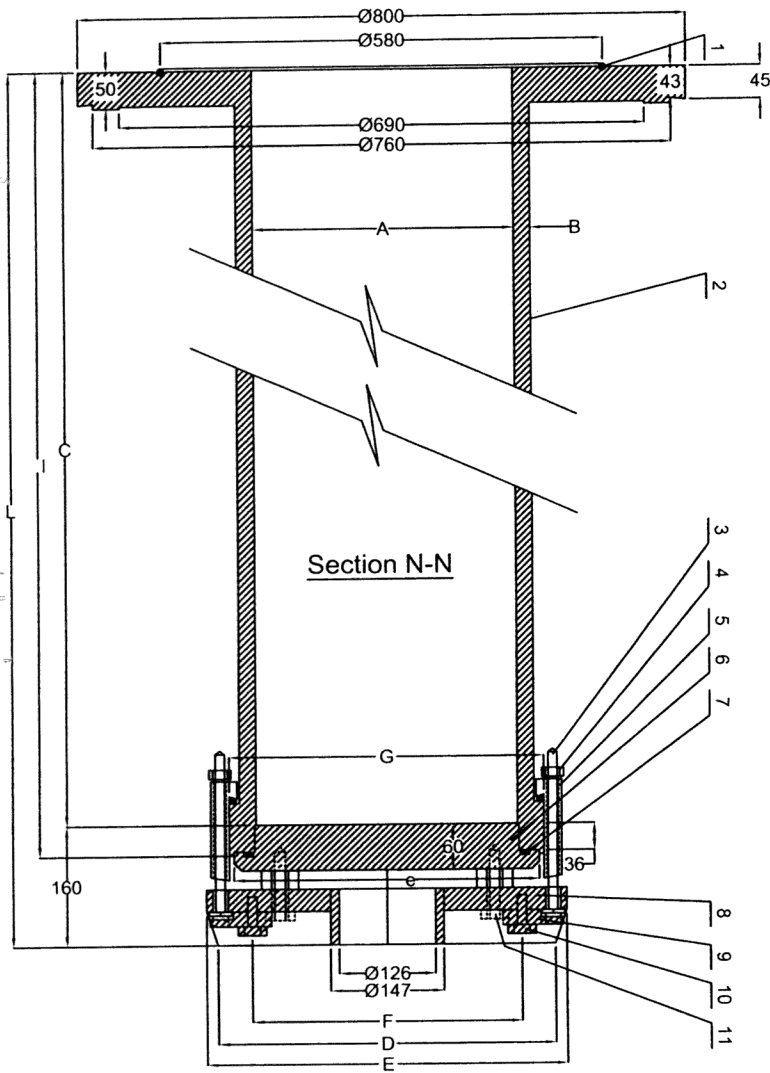




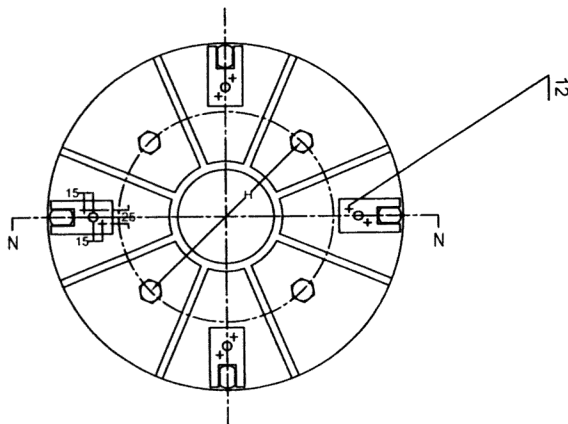


# ZHT112B-5

## CRUCIBLE Ø340x1400



ZHT112B-5	
A	Ø340
B	23
C	1400
L	1560
I	1441
G	Ø416
e	Ø404
D	Ø438
F	Ø348
E	Ø468
H	Ø280



Sr.#	Drawing No.	Title	Number	Material	Weight (kg)		Remarks
					Single	Total	
12	ZHT112B-3-7	PIN	8	45#	0.07	0.56	
11	GB5780-88	SCREW	4	A3	0.12	0.48	M16x70
10	GB5780-88	SCREW	4	A3	0.01	0.04	M12x30
9	ZHT112B-3-6	Catch Plate	4	40Cr	0.37	1.58	
8	ZHT112B-5-3	Bottom (Ø340)	1	A3	43.1		
7	GB1235-76	Caulking Ring	1				Ø8.6 (L=1135)
6	ZHT112B-5-2	Crucible Bottom	1	T2	68		
5	ZHT112B-3-3	CLAW	4	40Cr	0.52	2.2	
4	GB41-88	Nut	4	A3	0.015	0.06	M16
3	ZHT112B-3-2	Press Bolt	4	40Cr	0.36	1.44	
2	ZHT112B-5-1	Crucible (Ø340)	1	T2	524.6		
1	GB1235-76	Caulking Ring	1				Ø8.6 (L=1821)

Note: All dimensions are in mm.